



# Flight Plan & Site Survey

Created using **RPAS Wilco**®

Operation Name:	Northumberland RC NSCC Pictou
Pilot Name:	
Pilot Certificate:	
Flight Start:	December 28, 2023 4:09 PM
Flight End:	December 28, 2023 6:09 PM
Flight Area (Latitude):	45° 33' 25.20" N ( 45.557 )
Flight Area (Longitude):	62° 39' 55.80" W ( -62.666 )
Altitude - Radius:	<b>Alt:</b> 699 ft - <b>Rad:</b> 926.0 m ( 0.5 nm)
Airspace:	UNCONTROLLED
FIR - Contact:	CZQM - 506-867-7173

Please ensure you received all required authorizations prior to flight.

## Disclaimer

This Site Survey was created using RPAS Wilco by AIM Robotics. The flight plan contained is intended only for RPAS flights on the date/time and location specified. The user accepts all responsibility for the accuracy and completeness of the information contained.

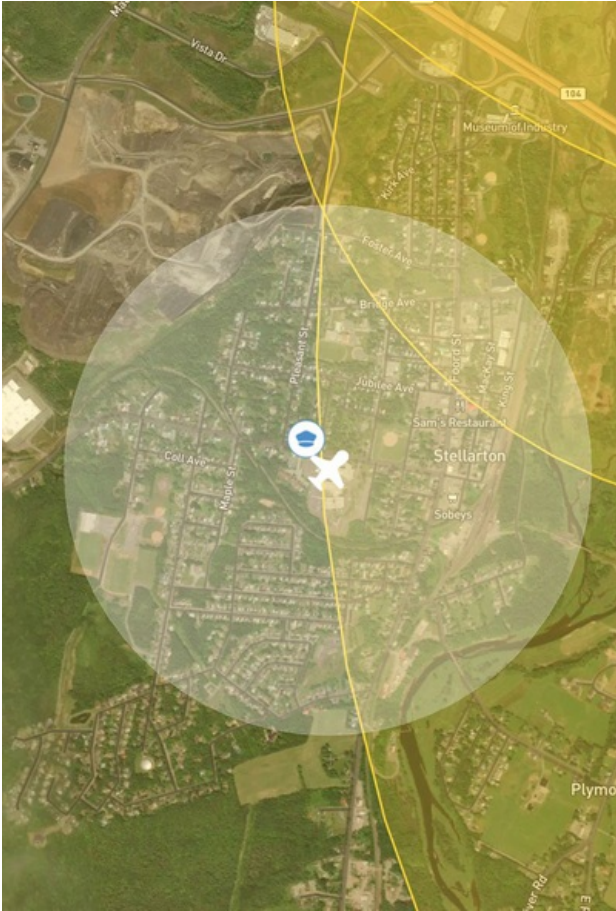
For the complete Terms & Conditions, see

<https://rpswilco.com/#/tnc>



## Included

- Site Survey
- Obstacles (if available)
- Nearby Aerodromes
- Canadian Aviation Regulations
- GFA
- Aerodrome Supplements
  - METAR & TAF (if available)
  - NOTAMS
  - CFS

## Flight Map

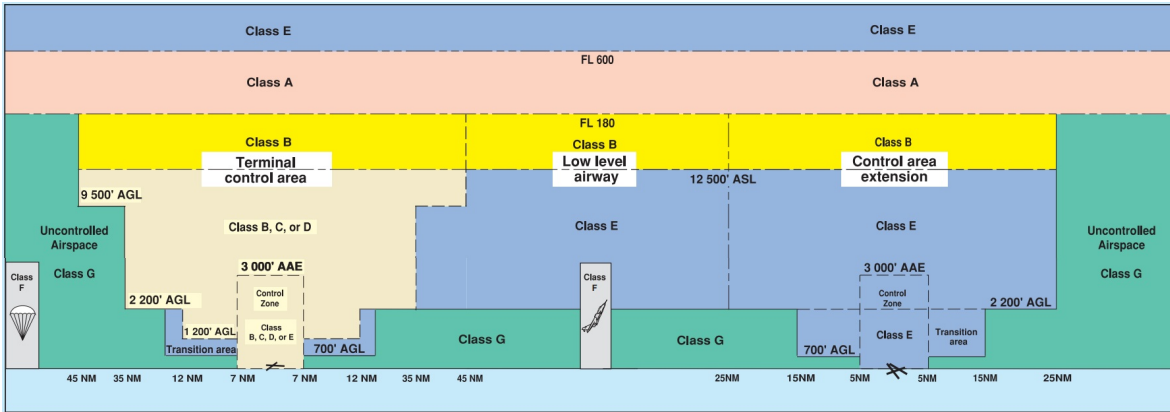


## MAP Details

	Latitude	Longitude
 <b>MODEL</b>	45° 33' 25.20" N ( 45.557 )	62° 39' 55.80" W ( -62.666 )
 <b>Pilot</b>	45° 33' 28.80" N ( 45.558 )	62° 39' 59.40" W ( -62.6665 )



## Airspace Classification



## Overlying Airspaces

Class	Name	Floor	Ceiling
E	CHARLO, NB CAE	2200AGL	12500MSL
B	CHARLO, NB CAE	12500MSL	18000MSL

## Nearest Aerodromes & Distance from Operation

THORBURN (CCZ5 - AERODROME - Reg)	Lat: 45.561 Long: -62.595	5.507 KM	2.97 NM
NEW GLASGOW (ABERDEEN HOSPITAL) (CNG2 - HELIPORT - Reg)	Lat: 45.572 Long: -62.644	2.363 KM	1.28 NM
TRENTON (CYTN - AERODROME - Reg)	Lat: 45.612 Long: -62.621	7.028 KM	3.79 NM
CENTREDALE (CDL8 - AERODROME - Reg)	Lat: 45.409 Long: -62.619	16.851 KM	9.1 NM

# Canadian Aviation Regulations

## Division III — General Operating and Flight Rules

For full listing please visit : <https://laws-lois.justice.gc.ca/eng/regulations/SOR-96-433/FullText.html#s-901.27>

### Visual Line-of-sight

- **901.11 (1)** Subject to subsection (2), no pilot shall operate a remotely piloted aircraft system unless the pilot or a visual observer has the aircraft in visual line-of-sight at all times during flight.
- **(2)** A pilot may operate a remotely piloted aircraft system without the pilot or a visual observer having the aircraft in visual line-of-sight if the operation is conducted in accordance with a special flight operations certificate — RPAS issued under section 903.03.

### Procedures

- **901.23 (1)** No pilot shall operate a remotely piloted aircraft system unless the following procedures are established:
  - **(a)** normal operating procedures, including pre-flight, take-off, launch, approach, landing and recovery procedures; and
  - **(b)** emergency procedures, including with respect to
    - **(i)** a control station failure,
    - **(ii)** an equipment failure,
    - **(iii)** a failure of the remotely piloted aircraft,
    - **(iv)** a loss of the command and control link,
    - **(v)** a fly-away, and
    - **(vi)** flight termination.
- **(2)** If the manufacturer of the remotely piloted aircraft system provides instructions with respect to the topics referred to in paragraphs (1)(a) and (b), the procedures established under subsection (1) shall reflect those instructions.
- **(3)** No pilot shall conduct the take-off or launch of a remotely piloted aircraft unless the procedures referred to in subsection (1) are reviewed before the flight by, and are immediately available to, each crew member.
- **(4)** No pilot shall operate a remotely piloted aircraft system unless the operation is conducted in accordance with the procedures referred to in subsection (1).

### Site Survey

**901.27** No pilot shall operate a remotely piloted aircraft system unless, before commencing operations, they determine that the site for take-off, launch, landing or recovery is suitable for the proposed operation by conducting a site survey that takes into account the following factors:

- **(a)** the boundaries of the area of operation;
- **(b)** the type of airspace and the applicable regulatory requirements;
- **(c)** the altitudes and routes to be used on the approach to and departure from the area of operation;
- **(d)** the proximity of manned aircraft operations;
- **(e)** the proximity of aerodromes, airports and heliports;
- **(f)** the location and height of obstacles, including wires, masts, buildings, cell phone towers and wind turbines;
- **(g)** the predominant weather and environmental conditions for the area of operation; and
- **(h)** the horizontal distances from persons not involved in the operation.

### Operations at or in the Vicinity of an Aerodrome, Airport or Heliport

- **901.47 (1)** No pilot shall operate a remotely piloted aircraft at or near an aerodrome that is listed in the *Canada Flight Supplement* or the *Water Aerodrome Supplement* in a manner that could interfere with an aircraft operating in the established traffic pattern.
- **(2)** Subject to section 901.73, no pilot shall operate a remotely piloted aircraft at a distance of less than
  - **(a)** three nautical miles from the centre of an airport; and
  - **(b)** one nautical mile from the centre of a heliport.
- **(3)** No pilot shall operate a remotely piloted aircraft at a distance of less than three nautical miles from the centre of an aerodrome operated under the authority of the Minister of National Defence unless the operation is conducted in accordance with a special flight operations certificate — RPAS issued under section 903.03.

### Records

- **901.48 (1)** Every owner of a remotely piloted aircraft system shall keep the following records:
  - **(a)** a record containing the names of the pilots and other crew members who are involved in each flight and, in respect of the system, the time of each flight or series of flights; and
  - **(b)** a record containing the particulars of any mandatory action and any other maintenance action, modification or repair performed on the system, including
    - **(i)** the names of the persons who performed them,
    - **(ii)** the dates they were undertaken,
    - **(iii)** in the case of a modification, the manufacturer, model and a description of the part or equipment installed to modify the system, and
    - **(iv)** if applicable, any instructions provided to complete the work.
- **(2)** Every owner of a remotely piloted aircraft system shall ensure that the records referred to in subsection (1) are made available to the Minister on request and are retained for a period of
  - **(a)** in the case of the records referred to in paragraph (1)(a), 12 months after the day on which they are created; and
  - **(b)** in the case of the records referred to in paragraph (1)(b), 24 months after the day on which they are created.
- **(3)** Every owner of a remotely piloted aircraft system who transfers ownership of the system to another person shall, at the time of transfer, also deliver to that person all of the records referred to in paragraph (1)(b).



## NOVA SCOTIA

## AERODROME/FACILITY DIRECTORY

## THORBURN NS

CCZ5

<b>REF</b>	N45 33 38 W62 35 41 2W 18°W (2015) UTC-4(3) Elev 120' A5003	
<b>OPR</b>	Scotia Pine 902-922-2470 Reg	
<b>PF</b>	C-1,2,3,4,5,6	
<b>FLT PLN</b>		
<b>FIC</b>	London 866-WXBRIEF (Toll free within Canada) or 866-541-4104 (Toll free within Canada & USA)	
<b>ACC</b>	(IFR only) Moncton 506-867-7177 or 866-480-8200.	
<b>SERVICES</b>		
<b>S</b>	4	
<b>RWY DATA</b>	Rwy 05/23 2000x40 GRVL	
<b>RCR</b>	Opr Ltd win maint	
<b>COMM</b>		
<b>ATF</b>	tfc 122.8 5NM 3100 ASL	
<b>CAUTION</b>	Deep ditch 100' fr button 05. High trees on apch to Rwy 05.	

## NOVA SCOTIA

## AERODROME/FACILITY DIRECTORY

**NEW GLASGOW (ABERDEEN HOSP) NS (Heli)****CNG2**

<b>REF</b>	N45 34 20 W62 38 39 Adj E 18°W (2014) UTC-4(3) Elev 77' A5003	
<b>OPR</b>	Aberdeen Hospital 902-752-7600 Ext 4531 Reg PPR	
<b>FLT PLN</b>		
<b>FIC</b>	London 866-WXBRIEF (Toll free within Canada) or 866-541-4104 (Toll free within Canada & USA)	
<b>ACC</b>	(IFR only) Moncton 506-867-7177 or 866-480-8200.	
<b>HELI DATA</b>	79 x 79 Rstd to heli max length 52.5'	
<b>LIGHTING</b>	RY(LO) FL(LO)	
<b>COMM</b>		
<b>ATF</b>	tfc 122.8 5NM 3100 ASL	
<b>PRO</b>	Arr/dep btwn 290°-360° fr heli	
<b>CAUTION</b>	Trenton 2.5NM N. Thorburn 2NM ESE.	

## NOVA SCOTIA

## AERODROME/FACILITY DIRECTORY

## TRENTON NS

CYTN

<b>REF</b>	N45 36 43 W62 37 16 Adj E 18°W (2013) UTC-4(3) Elev 319' A5003 LO8 HI6 CAP	
<b>OPR</b>	Trenton Airport Ltd 902-752-9348/ 754-9385 Reg Ldg fees	
<b>PF</b>	B-1 C-2,3,4,5,6	
<b>CUST</b>	AOE/CAN	
<b>FLT PLN</b>	<p><b>FIC</b> London 866-WXBRIEF (Toll free within Canada) or 866-541-4104 (Toll free within Canada &amp; USA)</p> <p><b>ACC</b> (IFR only) Moncton 506-867-7177 or 866-480-8200</p> <p><b>WX</b> WxCam</p>	
<b>SERVICES</b>	Call out chg may be levied.	
<b>FUEL</b>	100LL, JA-1 12-21Z† Mon-Fri O/T ctc opr	
<b>RWY DATA</b>	Rwy 06(064°)/24(244°) 5377x145 ASPH Rwy 06 up 0.58% first 1400' Rwy 24 up 1.79% first 3978'	
<b>RCR</b>	Opr Ltd win maint PN	
<b>LIGHTING</b>	06-AS(ME) AP, 24-AS(ME) P1 ARCAL-122.8 type K	
<b>COMM</b>		
<b>ATF</b>	UNICOM (AU) 122.8 12-21Z† Mon-Fri O/T tfc 122.8 5NM 3300 ASL	
<b>PAL</b>	Moncton Ctr 135.3 135.65	



## NOVA SCOTIA

## AERODROME/FACILITY DIRECTORY

## CENTREDALE NS

CDL8

<b>REF</b>	N45 24 34 W62 37 08 1.4ESE 18°W (2016) UTC-4(3) Elev 591' A5003	
<b>OPR</b>	Mike Gourd 902-396-7000 Fax 902-923-2492 Reg PPR	
<b>PF</b>	B-1 D-2,5	
<b>FLT PLN</b>		
<b>FIC</b>	London 866-WXBRIEF (Toll free within Canada) or 866-541-4104 (Toll free within Canada & USA)	
<b>RWY DATA</b>	Rwy 12(118°)/30(299°) 1815x60 GRASS Rwy 12 up 3.0%	
<b>RCR</b>	Opr ltd hrs No win maint	
<b>COMM</b>		
<b>ATF</b>	UNICOM ltd hrs O/T tfc 122.8 5NM 3600 ASL	
<b>CAUTION</b>	Tower 50 AGL 120' N A/D. Trees 40 AGL 100' N A/D, trees 50 AGL 600' W Thld 12. Rwy 12 first 600' undulating. Wildlife in vic of rwy. Barn 25 AGL 550' W Thld 30.	